

# ADMINISTRATIVE DECISIONS WITHIN THE ULW SOFTWARE



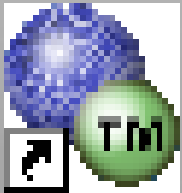
Patricia Mason  
Training Instructor  
FBI/CJIS Division  
Patricia.Mason@leo.gov  
304-625-2367

# What is ULW?

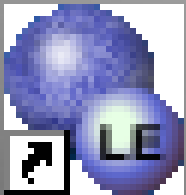
ULW is a  
latent fingerprint processing software  
developed as part of a program  
to institute standards to  
improve interoperability  
and sharing of  
latent identification services.

# ULW

**ULW is a software suite designed of three components:**



- Provide File Management for Transactions
- Manage Profiles



- Allows User to Mark Minutiae
- Provides Image Processing Tools



- Allow side-by-side comparison of latent and exemplar images
- Provide ability to mark and correspond identifiers on comparison images

# Updates to the ULW

- ▣ Combine NGI SRLs and latent searches into single file from within LE
- ▣ Optimized support for large/palm images
- ▣ Increased speed when loading images using “View Images” in the TM
- ▣ IRQ+ option allows entry of UCN, BSI and Finger #
- ▣ Display of columns in CT are saved across sessions

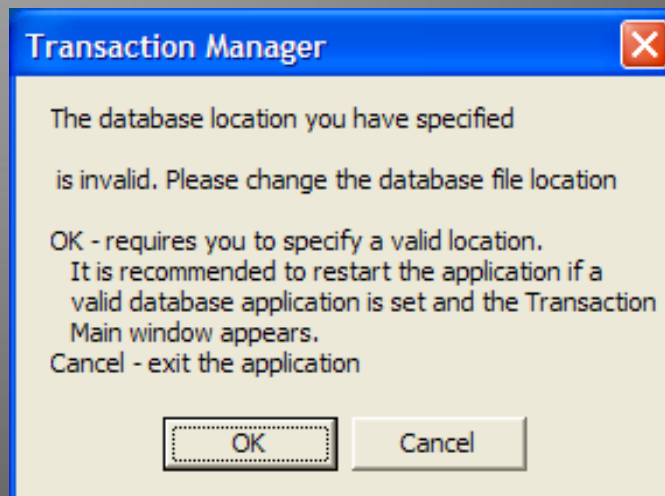
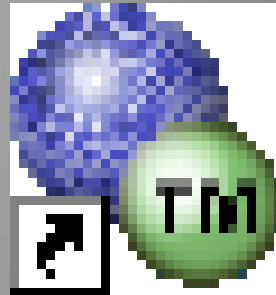
# Updates to the ULW

- ▣ Allows user to specify Request Features Record (RFR)
- ▣ Allows user to turn Biometric Decision Responses (BDECs) on/off
- ▣ Increased Region of Interest (ROI) vertices for greater markup accuracy
- ▣ Compression algorithm enhancements allowing ULW to open more images
- ▣ Civil Database Searches/Responses

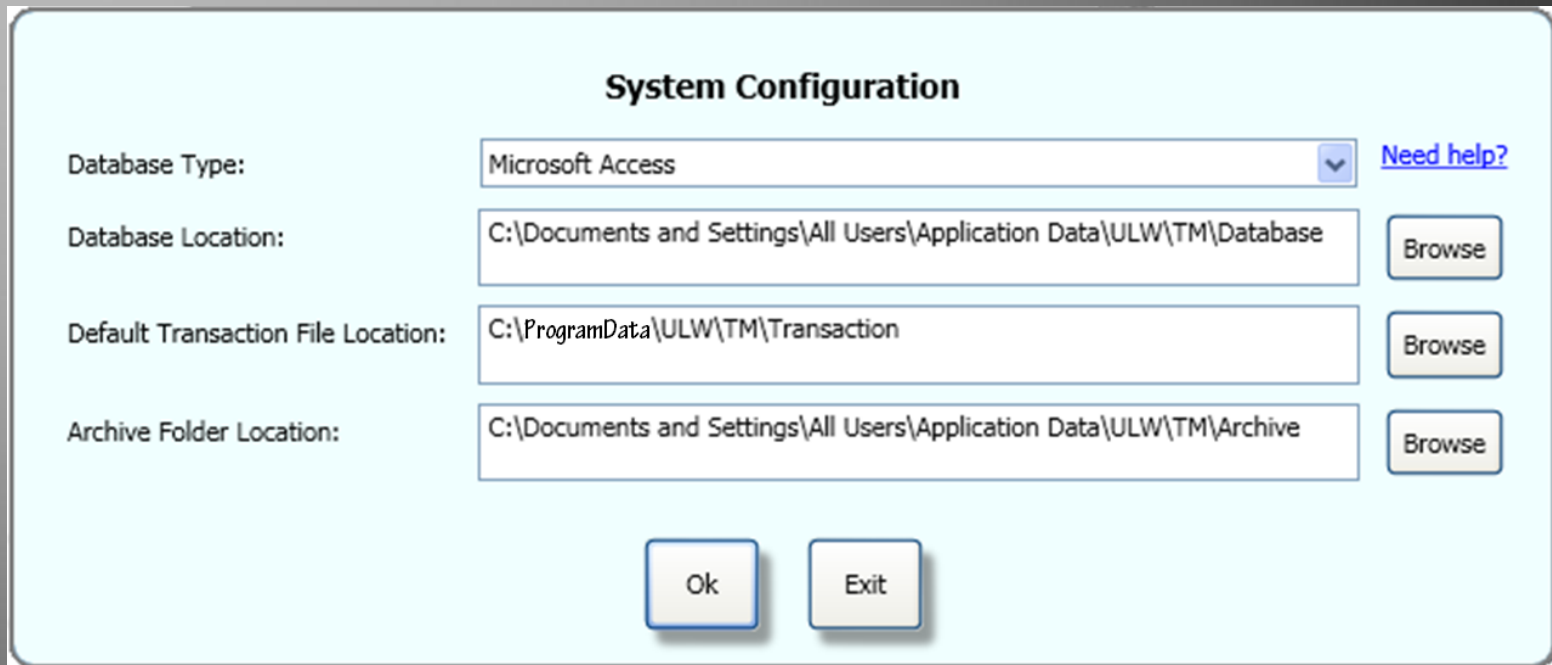
# Administrative Account

- ▣ Recommend one per agency with one alternate
- ▣ Settings Completed Once per Installation
- ▣ Allows Global Changes that Affect All Users on the System

# Administrative Settings



# Administrative Settings



The image shows a 'System Configuration' dialog box with a light blue background and a thin border. It contains four rows of settings, each with a label on the left and a text input field on the right. The first row has a dropdown menu for 'Database Type'. The next three rows have 'Browse' buttons to the right of their respective text fields. At the bottom center are 'Ok' and 'Exit' buttons. A blue link 'Need help?' is located to the right of the first row.

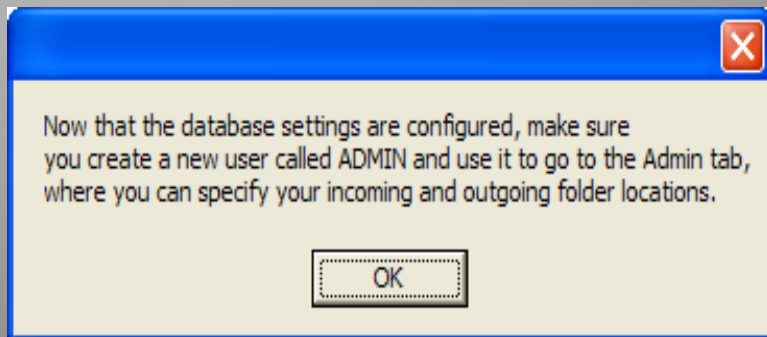
System Configuration	
Database Type:	Microsoft Access <a href="#">Need help?</a>
Database Location:	C:\Documents and Settings\All Users\Application Data\ULW\TM\Database <input type="button" value="Browse"/>
Default Transaction File Location:	C:\ProgramData\ULW\TM\Transaction <input type="button" value="Browse"/>
Archive Folder Location:	C:\Documents and Settings\All Users\Application Data\ULW\TM\Archive <input type="button" value="Browse"/>
<input type="button" value="Ok"/> <input type="button" value="Exit"/>	

**Determine HOW you want your software to be accessed.**

- Single Workstation** – use the default settings (C:\); creates a stand-alone computer and the users can only access transactions created on this computer.
- Multiple Workstations** – use a shared drive (e.g. V:\ or Z:\); allows users to access transactions on any networked computer with the ULW software. Select the appropriate folder or create a **New Folder**.



# Administrative Settings



If you would like to use your Windows Credentials for logging in, please select Windows Credentials. Otherwise, please select Custom Credentials, or create a new user.

☐ Windows Credentials ☒ Custom Credentials

User Name

Password

☐ Stay Signed In

New to ULW? Create a new user account

This is a login form with a light blue background. It includes a message box at the top, radio buttons for credential selection, input fields for username and password, a 'Stay Signed In' checkbox, three buttons (Login, Exit, Help), and a 'Create New User' button at the bottom.



# Statistics

- ▣ The IAFIS Criminal Master File has roughly 80 million subjects
- ▣ The IAFIS Civil Repository File has roughly 41 million fingerprint cards.
- ▣ Interstate Photo File –
  - 19,340,902 photos for over 9 million records

# Statistics

- ▣ Palmprint Submissions to IAFIS
  - Fiscal Year 2014 – 2,591,748
- ▣ LFFS –
  - Fiscal Year 2014 – 70,850
- ▣ LFIS –
  - Fiscal Year 2014 – 17,751
- ▣ ULF – 504,418
  - State and Local – 262,107
  - Other Federal Agencies – 174,015

# Contacts

- ▣ Latent Customer Engagement Group
  - 304-625-L8NT (5868) [ulw@leo.gov](mailto:ulw@leo.gov)
- ▣ CJIS Customer Service Group
  - 304-625-5590
- ▣ Biometric Training Team
  - 304-625-4980 [BTTT@leo.gov](mailto:BTTT@leo.gov)
- ▣ ULW Software Download
  - [www.fbibiospecs.org](http://www.fbibiospecs.org) or [frederick.jaco@leo.gov](mailto:frederick.jaco@leo.gov)

QUESTIONS??